

TOOL BOX TALKS

Safe Job Site Stairways

Construction Slip, Trip and Fall Prevention



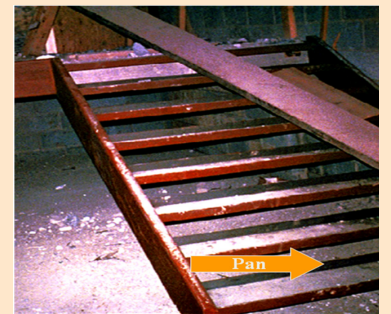
Stairways and ladders cause many injuries and fatalities among construction employees. Many of these falls can result in lifetime disabilities and can be difficult to treat. Review these safety tips with your employees.

Tool Box Tips

1. Stairways with four or more risers or more than 30 inches high must have a stair rail along each unprotected side or edge.
2. Install stairs between 30 and 50 degrees.
3. Must have uniform riser height and tread depth with less than a 1/4 inch variation.
4. Provide handrails on job site stairways.
5. The top rail must support 200 pounds and the top rail must be placed at 36-37 inches.
6. Use good quality lumber on stair rails.
7. Provide a mid-rail to prevent a fall beneath the top rail.
8. Keep stairs clear of slip and trip hazards such as grease, tools, ice, and snow.
9. Stair rails must be free of hazards like splinters and nails.



Without the use of guardrails, employees could easily fall.



Only use pan stairs with filler material at least to the top edge of the pan.



The stairway to this platform has more than four risers and needs guarding.

These advisory materials have been developed from national standards and sources believed to be reliable, however, no guarantee is made as to the sufficiency of the information contained in the material and Missouri Employers Mutual Insurance Company assumes no liability for its use. Advice about specific situations should be obtained from a safety professional.

For more information:



www.worksafecenter.com



1.888.499.SAFE (7233)

Missouri Employers Mutual

Work SAFE